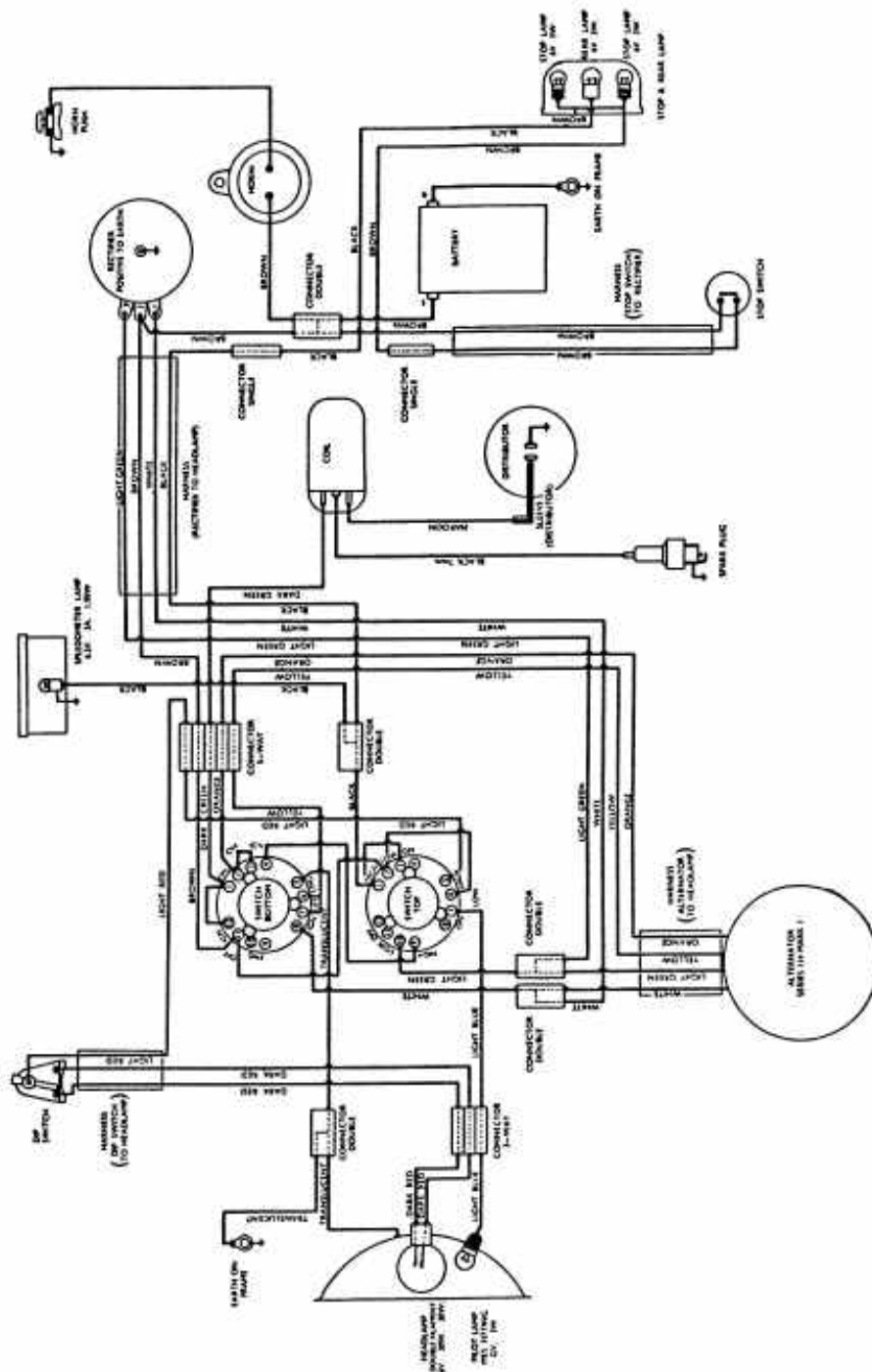
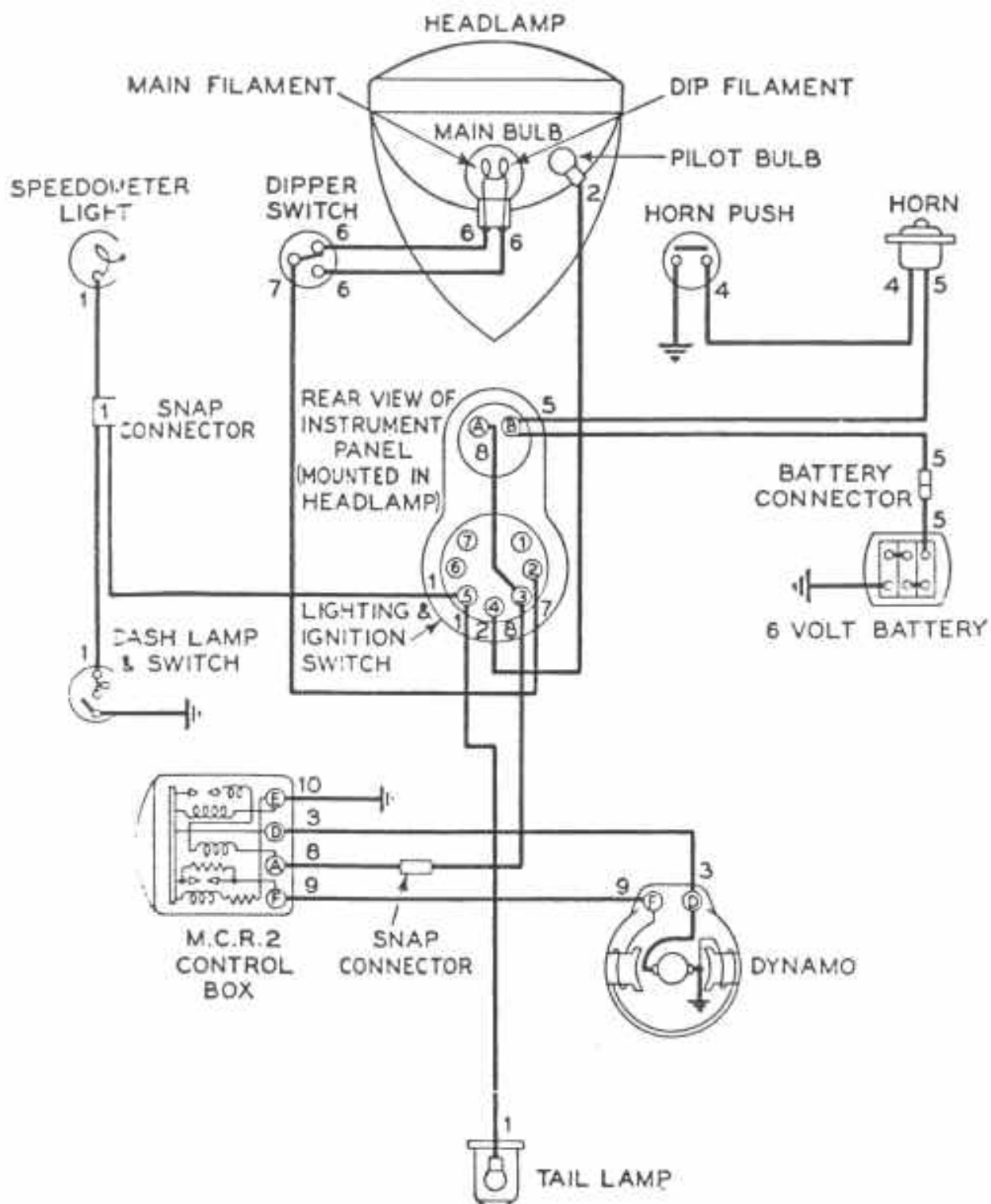


ARIEL "COLT" MODEL L.H.



EQUIPMENT	PART No.
HEADLAMP	01980
IGNITION SWITCH	02098
DIP SWITCH	4-96
ALTERNATOR	01977
DISTRIBUTOR	01811
RECTIFIER	01943
COIL	01944
BATTERY	Varley MC5/9
STOP & TAIL LAMP	02314
STOP SWITCH	02228

ARIEL MOTORCYCLES

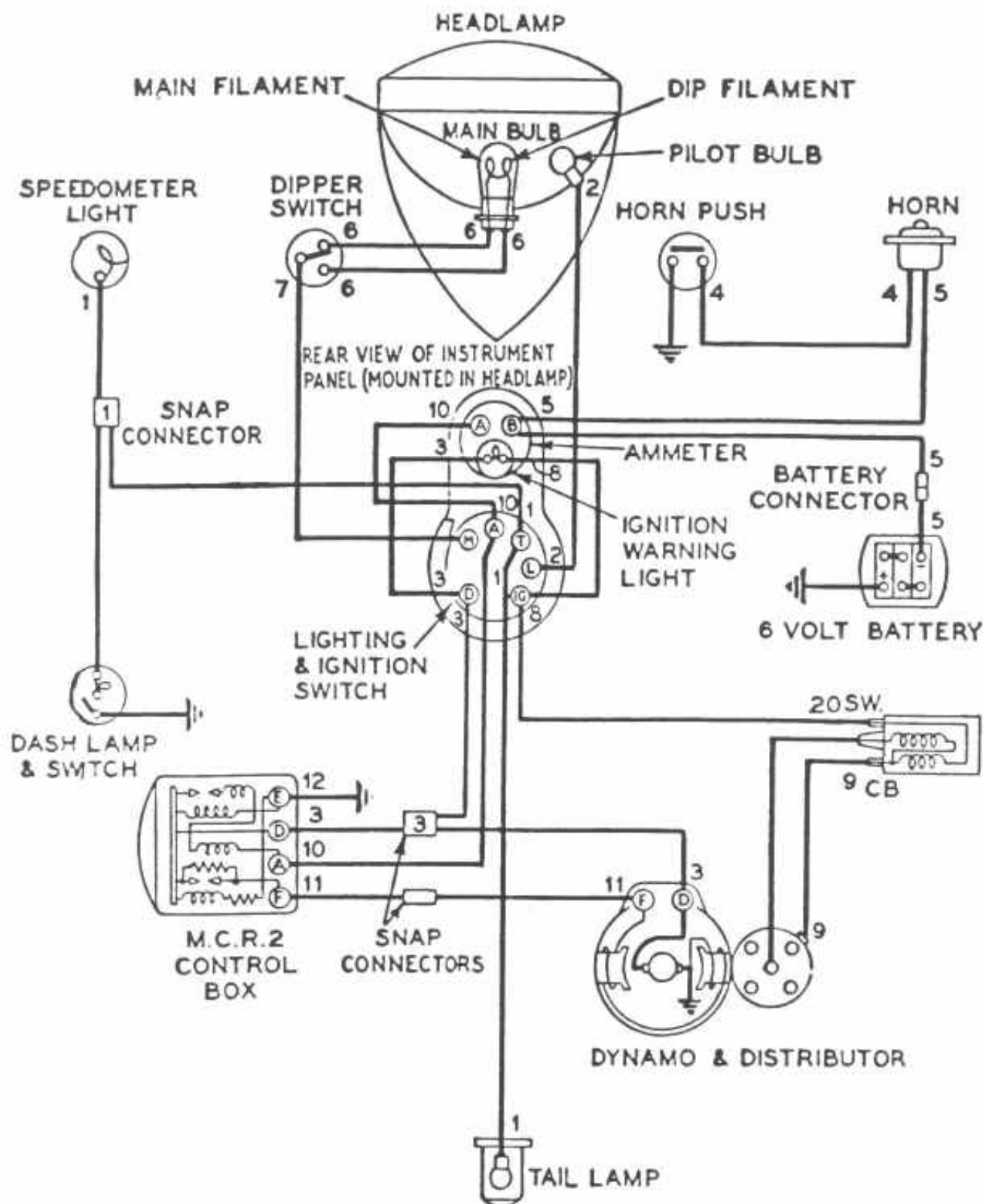


KEY TO CABLE COLOURS

- | | |
|-------------------|------------------|
| 1 RED | 6 BLUE |
| 2 RED & BLACK | 7 BLUE & WHITE |
| 3 YELLOW | 8 WHITE & PURPLE |
| 4 YELLOW & PURPLE | 9 GREEN |
| 5 YELLOW & BLACK | 10 BLACK |

WIRING DIAGRAM ARIEL 500-C.C. TWIN-CYLINDER
MODELS KG AND KH, 1948-49

ARIEL MOTORCYCLES

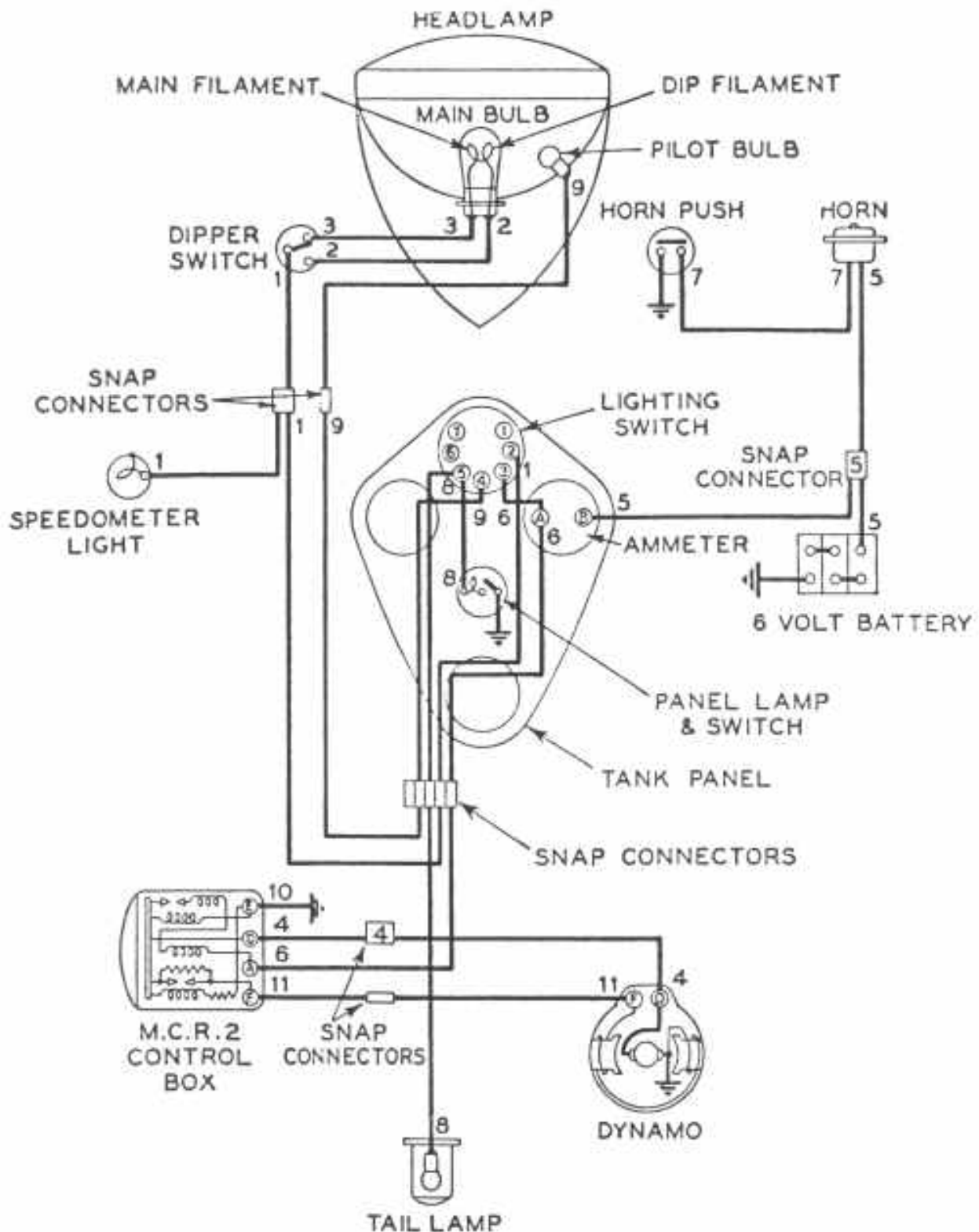


KEY TO CABLE COLOURS

- | | |
|-------------------|-------------------|
| 1 RED | 7 BLUE & WHITE |
| 2 RED & BLACK | 8 WHITE |
| 3 YELLOW | 9 WHITE & BROWN |
| 4 YELLOW & PURPLE | 10 WHITE & PURPLE |
| 5 YELLOW & BLACK | 11 GREEN & BLACK |
| 6 BLUE | 12 BLACK |

WIRING DIAGRAM ARIEL 1000-C.C. SQUARE FOUR, 1949
AND 1951-52 (NOT 1950).

ARIEL MOTORCYCLES

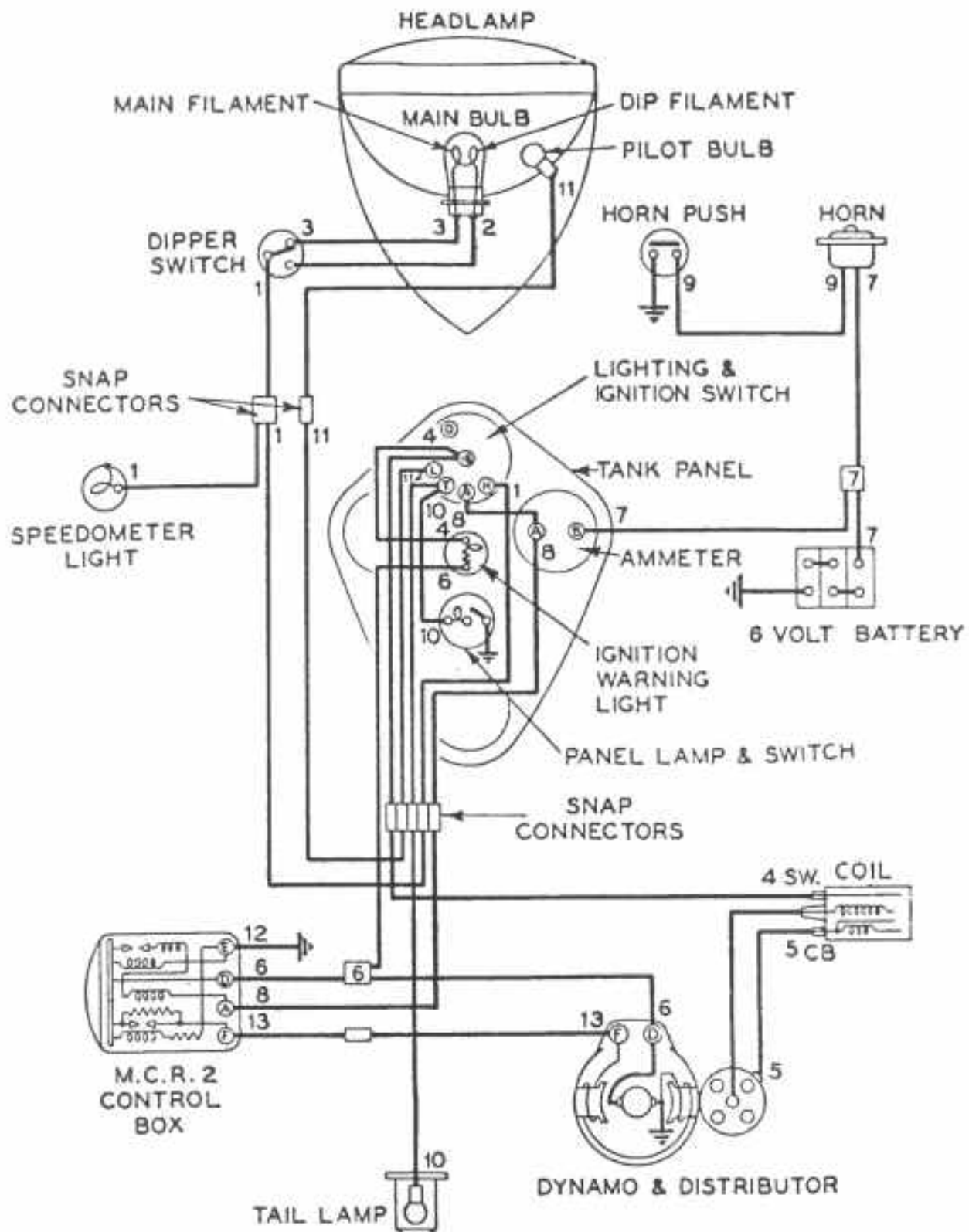


KEY TO CABLE COLOURS

- | | |
|--------------------|---------------------|
| 1 BLUE | 7 BROWN WITH BLACK |
| 2 BLUE WITH RED | 8 RED |
| 3 BLUE WITH WHITE | 9 RED WITH BLACK |
| 4 YELLOW | 10 BLACK |
| 5 BROWN | 11 BLACK WITH GREEN |
| 6 BROWN WITH WHITE | |

WIRING DIAGRAM ARIEL 500-C.C. TWIN-CYLINDER
MODELS KG AND KH, 1950.

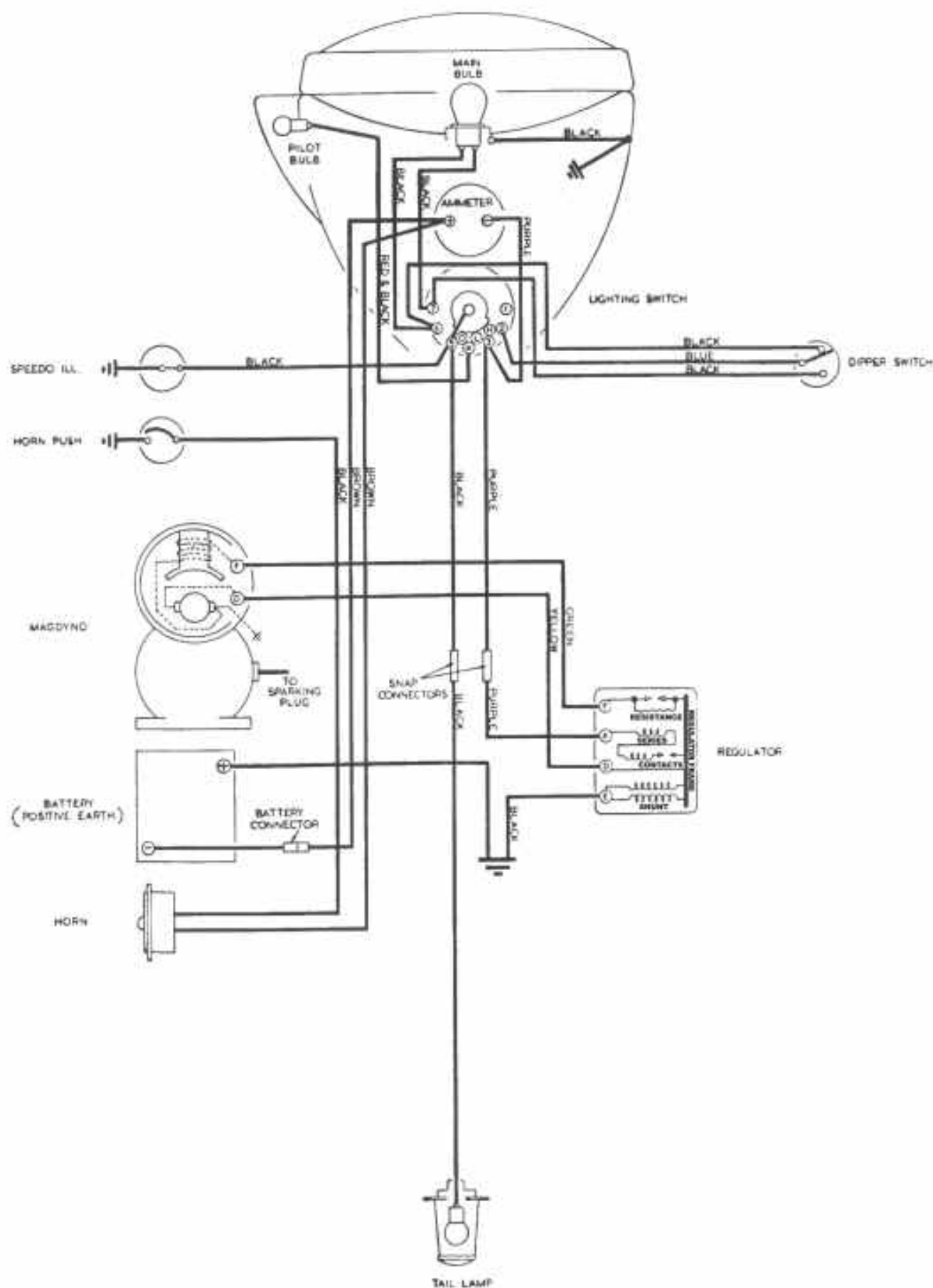
ARIEL MOTORCYCLES

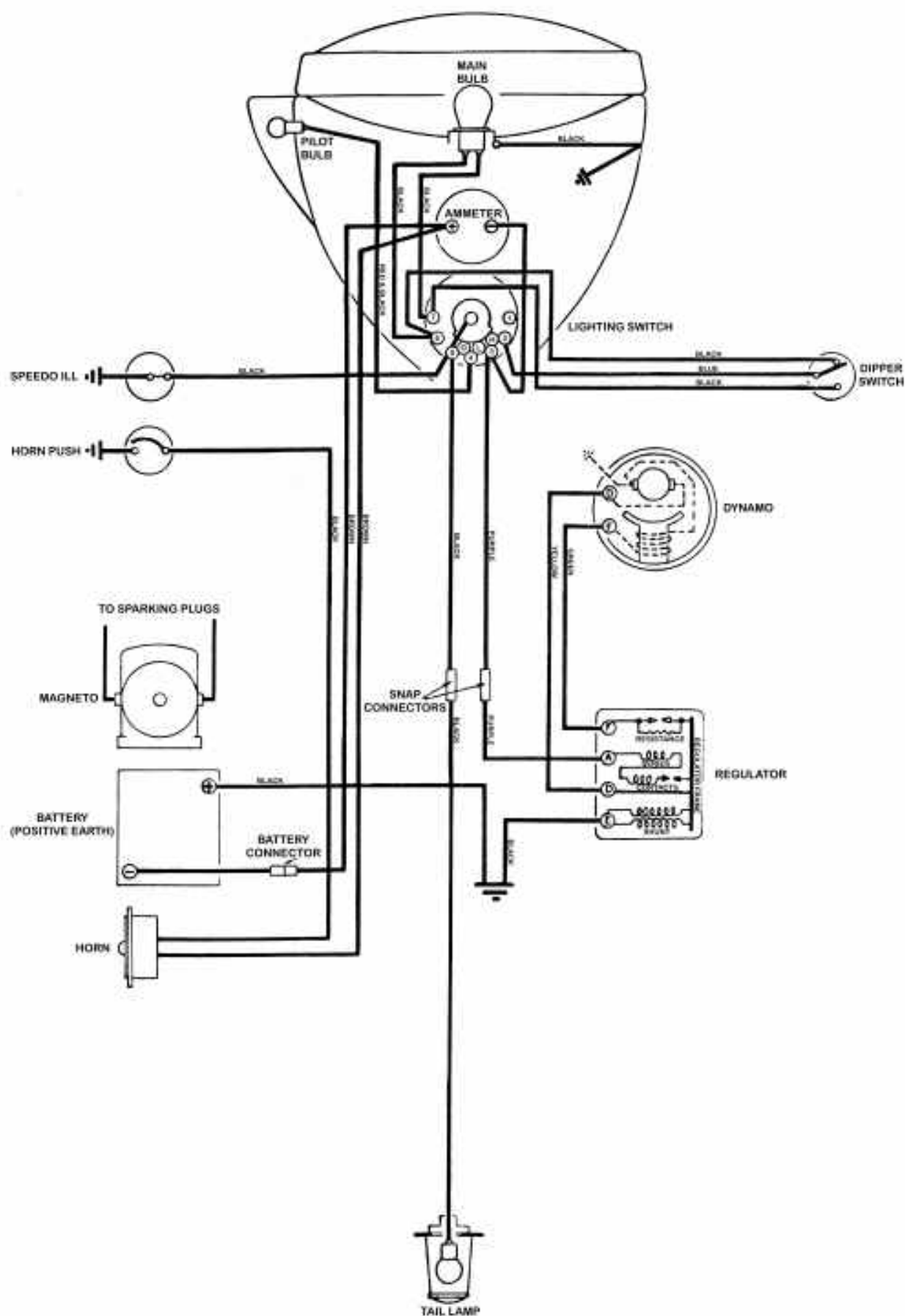


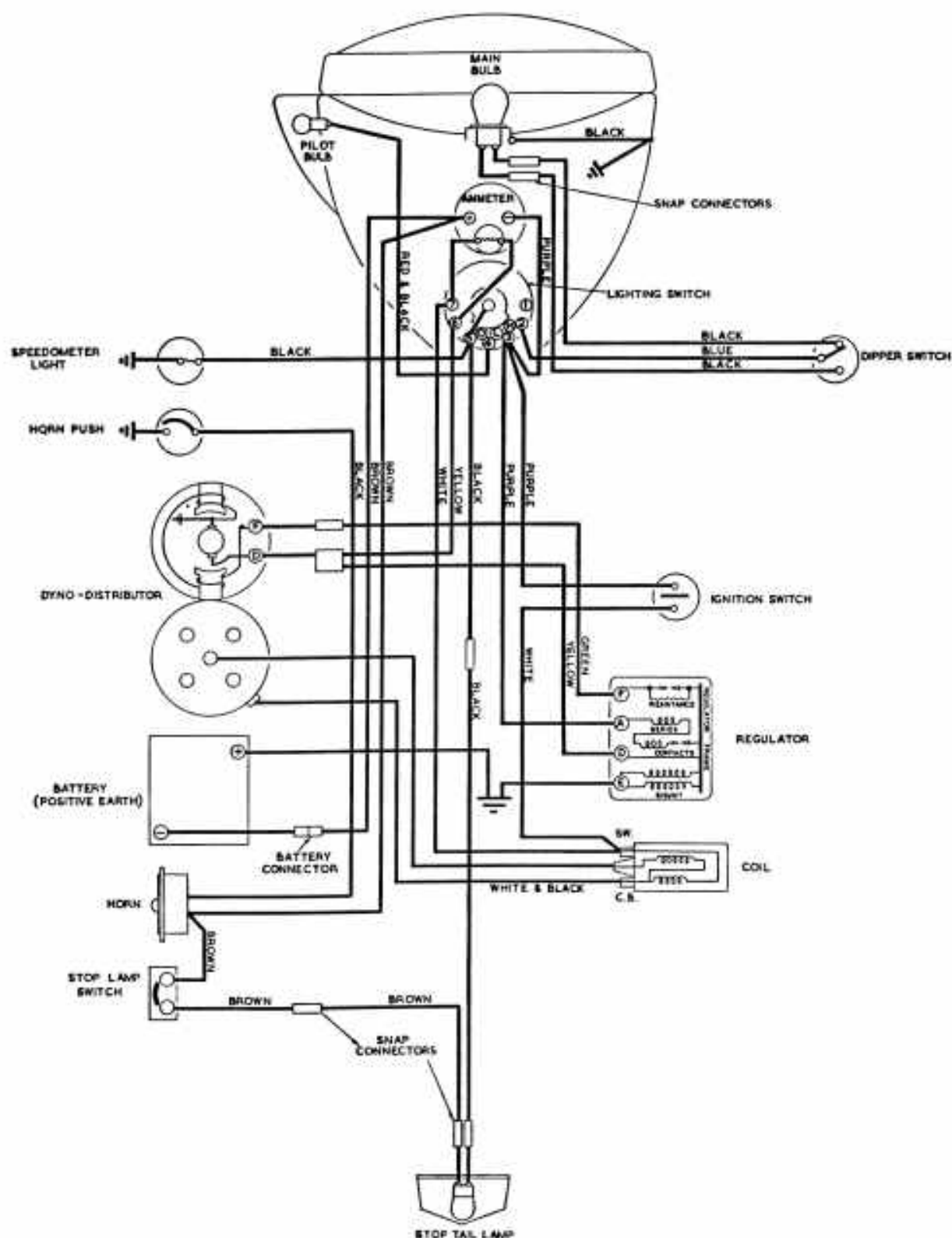
KEY TO CABLE COLOURS

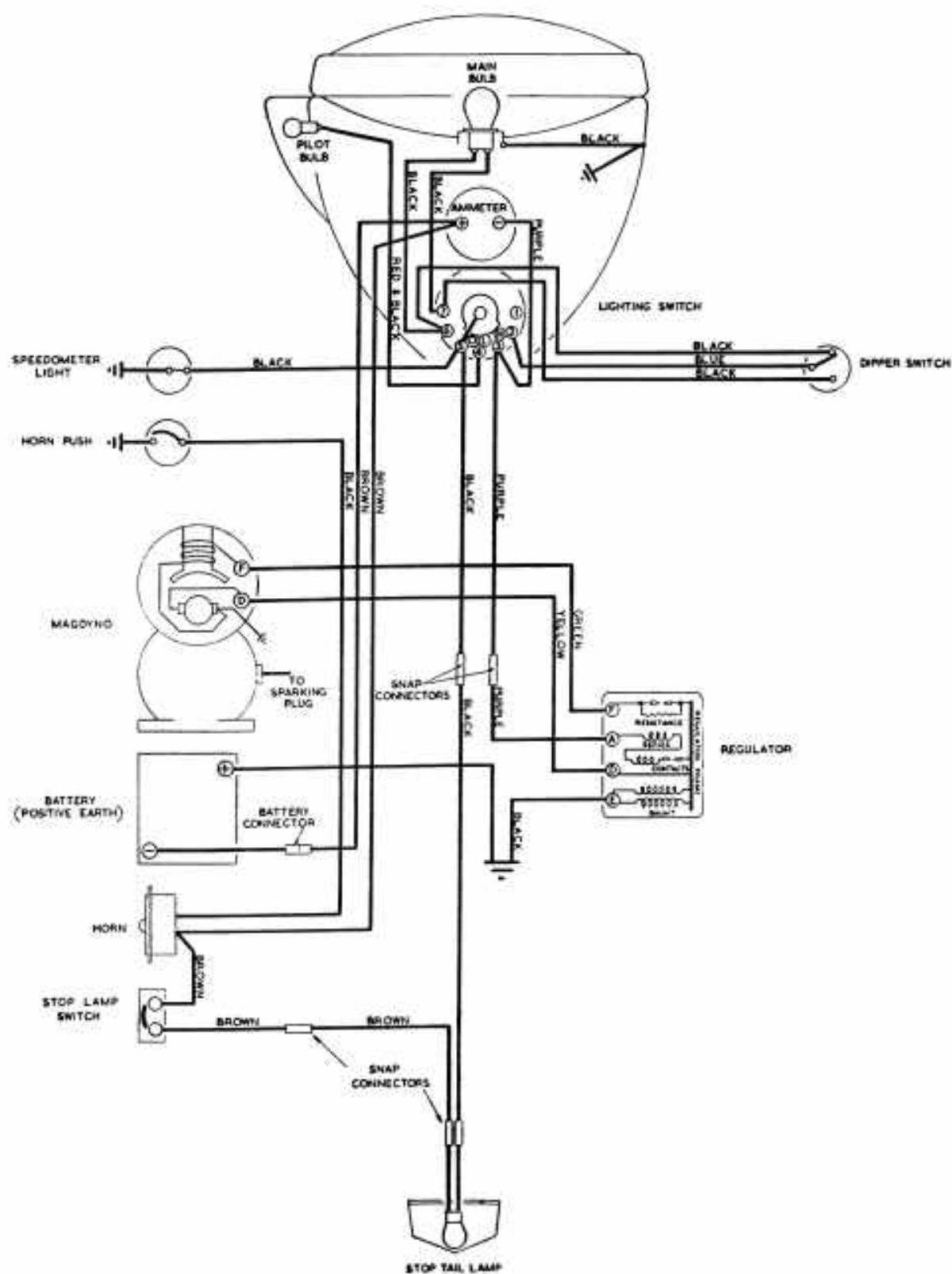
1 BLUE	6 YELLOW	11 RED WITH BLACK
2 BLUE WITH RED	7 BROWN	12 BLACK
3 BLUE WITH WHITE	8 BROWN WITH WHITE	13 BLACK WITH GREEN
4 WHITE	9 BROWN WITH BLACK	
5 WHITE WITH BLACK	10 RED	

WIRING DIAGRAM ARIEL 1000-C.C. SQUARE FOUR, 1950
MODELS ONLY (COIL IGNITION).



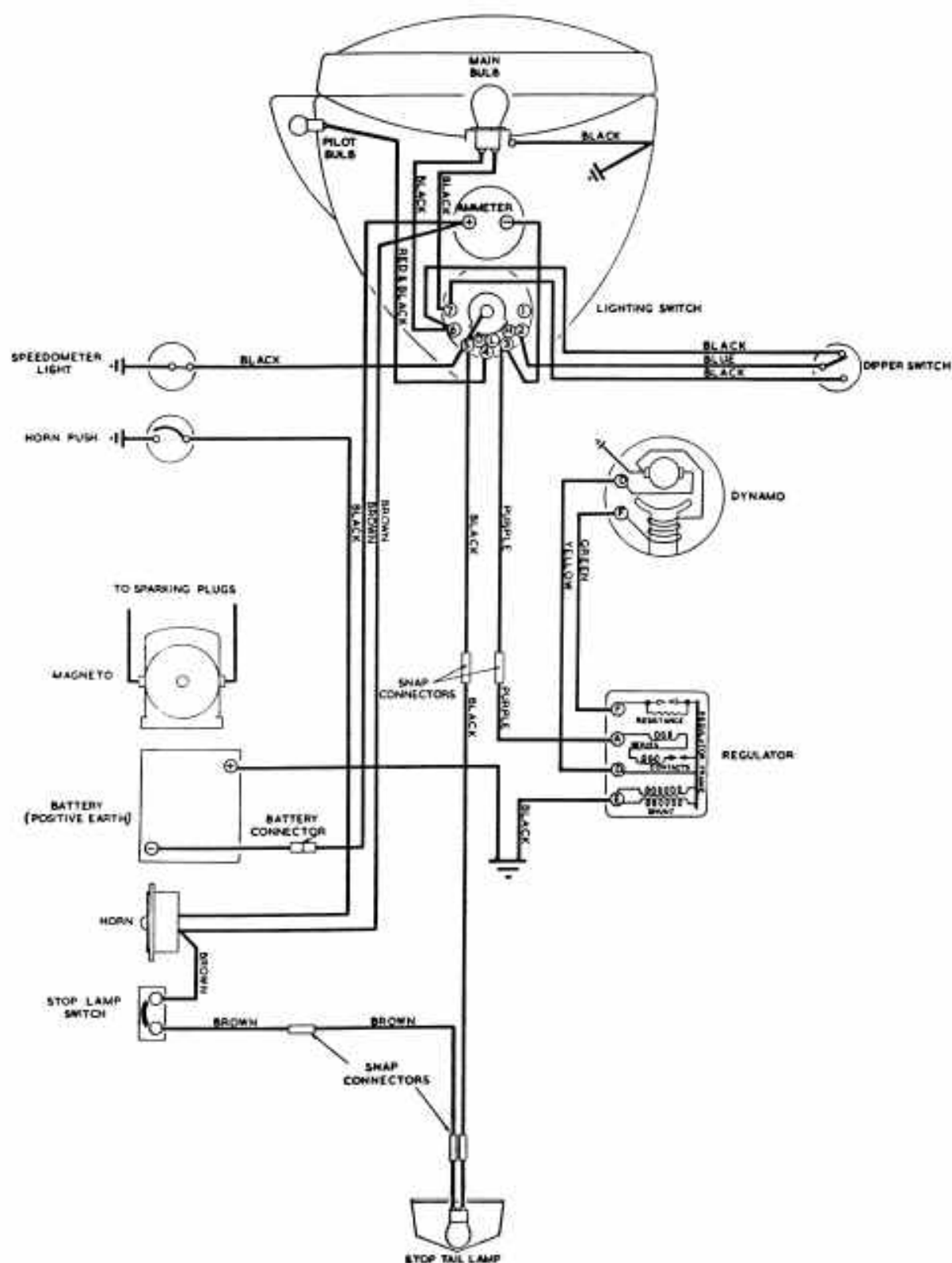






LUCAS ELECTRICAL EQUIPMENT

ARIEL TWIN CYLINDER MOTOR
CYCLES 1953

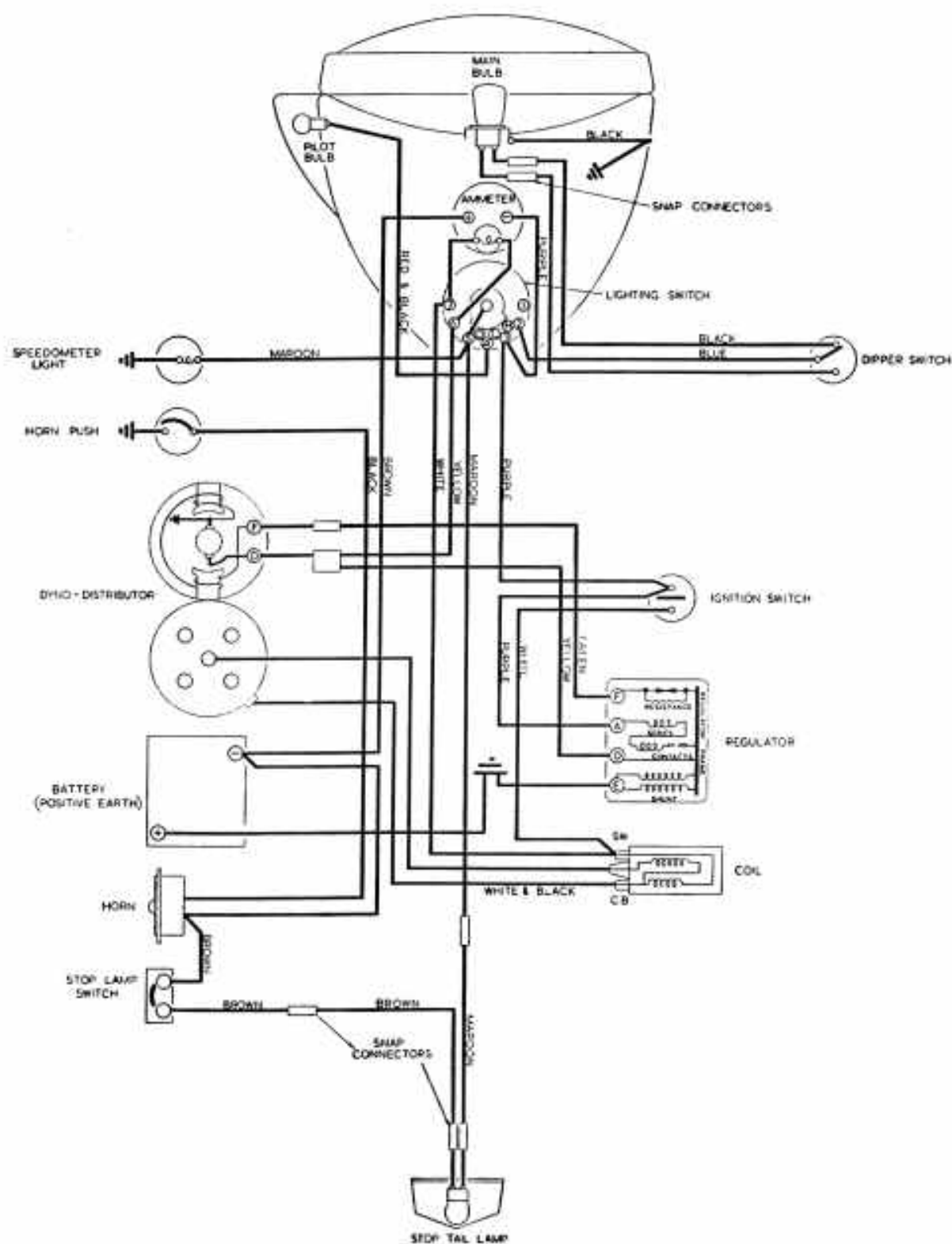


ISSUED:
MARCH 1953

WIRING DIAGRAM No. W96644 6 VOLT

LUCAS ELECTRICAL EQUIPMENT

ARIEL "SQUARE FOUR" MOTOR CYCLES
(1954)

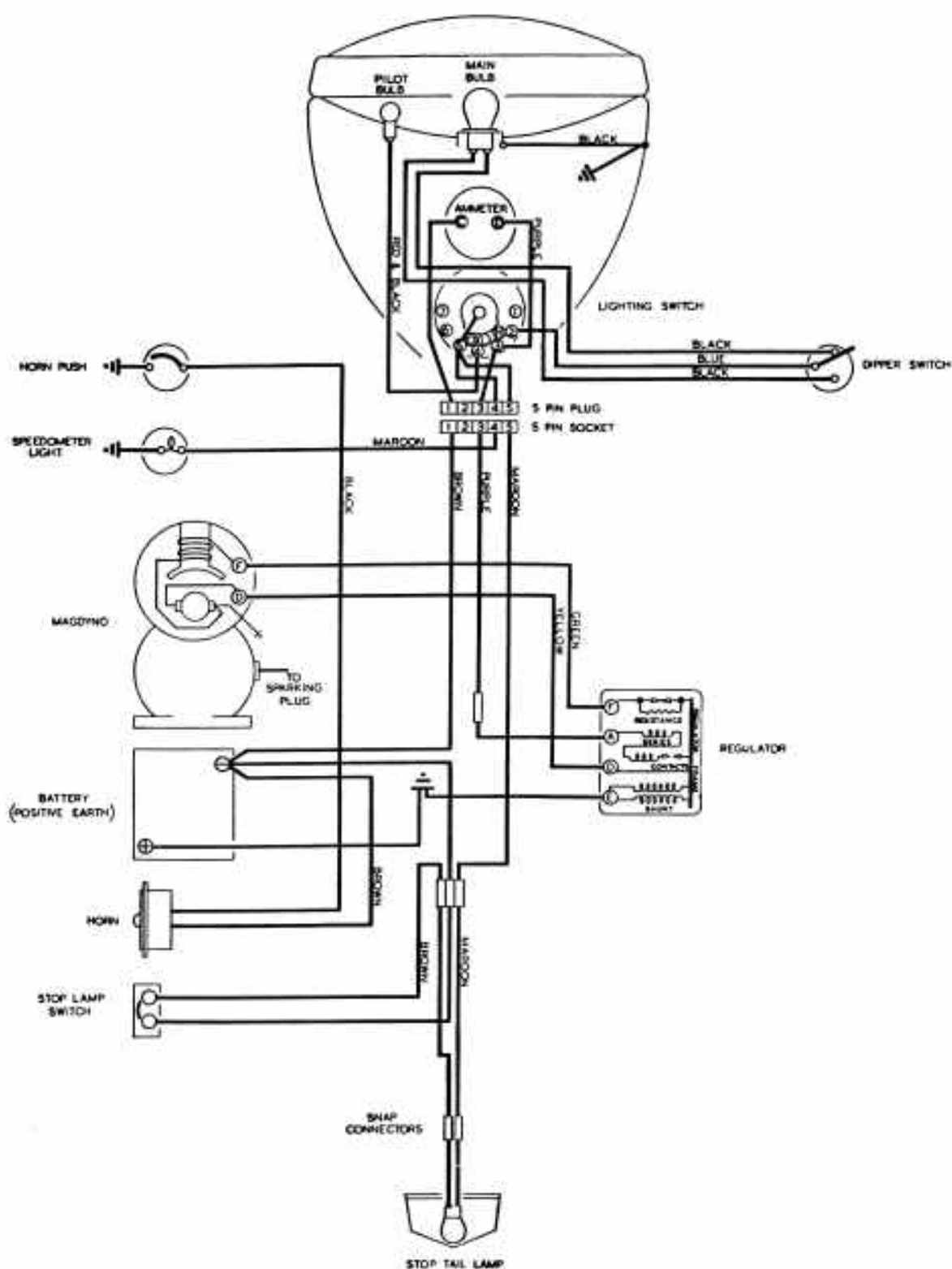


ISSUED:
FEBRUARY 1954

WIRING DIAGRAM No. W3584I 6 VOLT

LUCAS ELECTRICAL EQUIPMENT

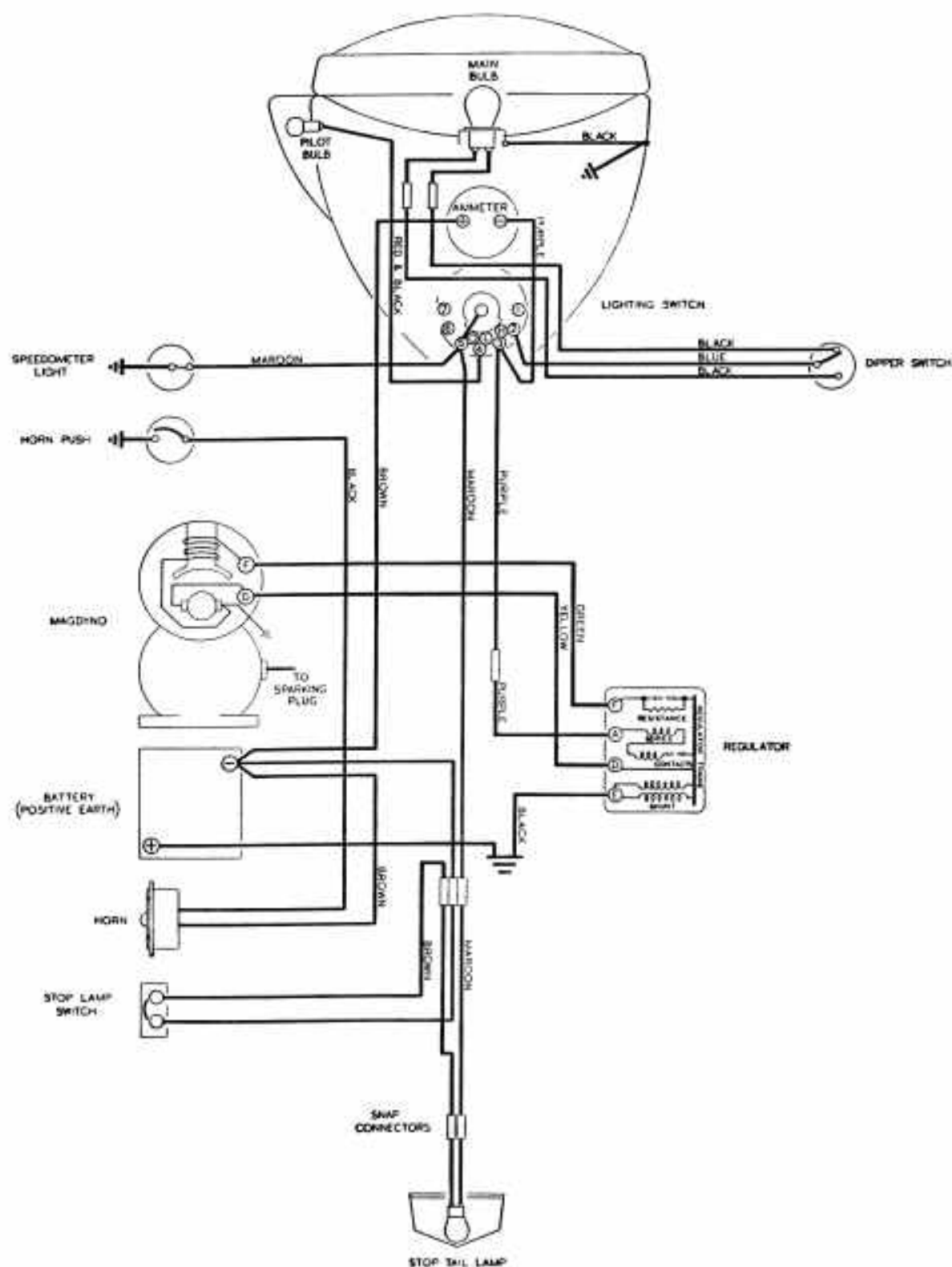
ARIEL SINGLE CYLINDER MOTOR CYCLES
COMPETITION MODEL
(1954)



ISSUED:
JUNE 1954

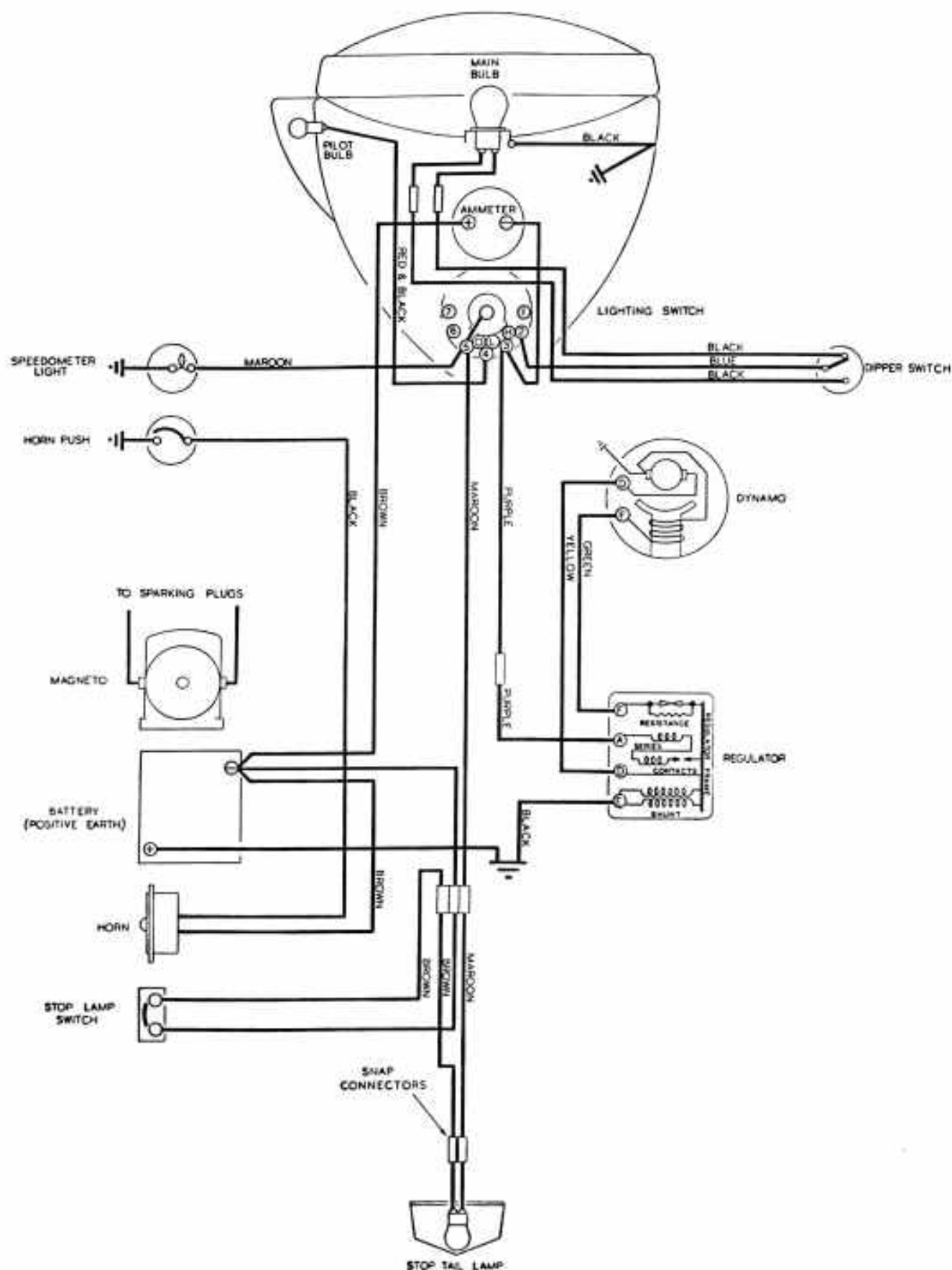
WIRING DIAGRAM No. W36531

6 VOLT



LUCAS ELECTRICAL EQUIPMENT

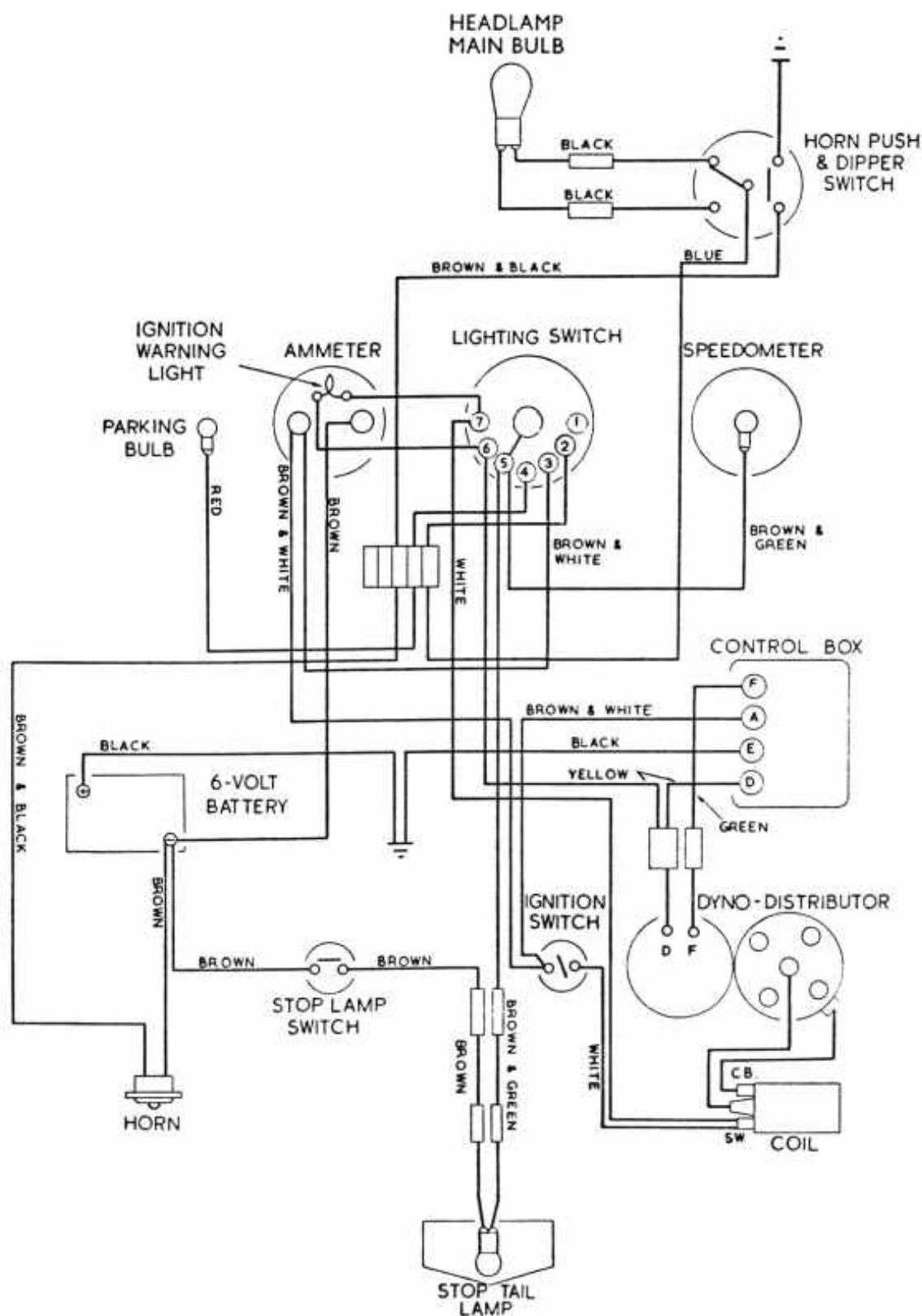
ARIEL TWIN CYLINDER MOTOR CYCLES
(1954)

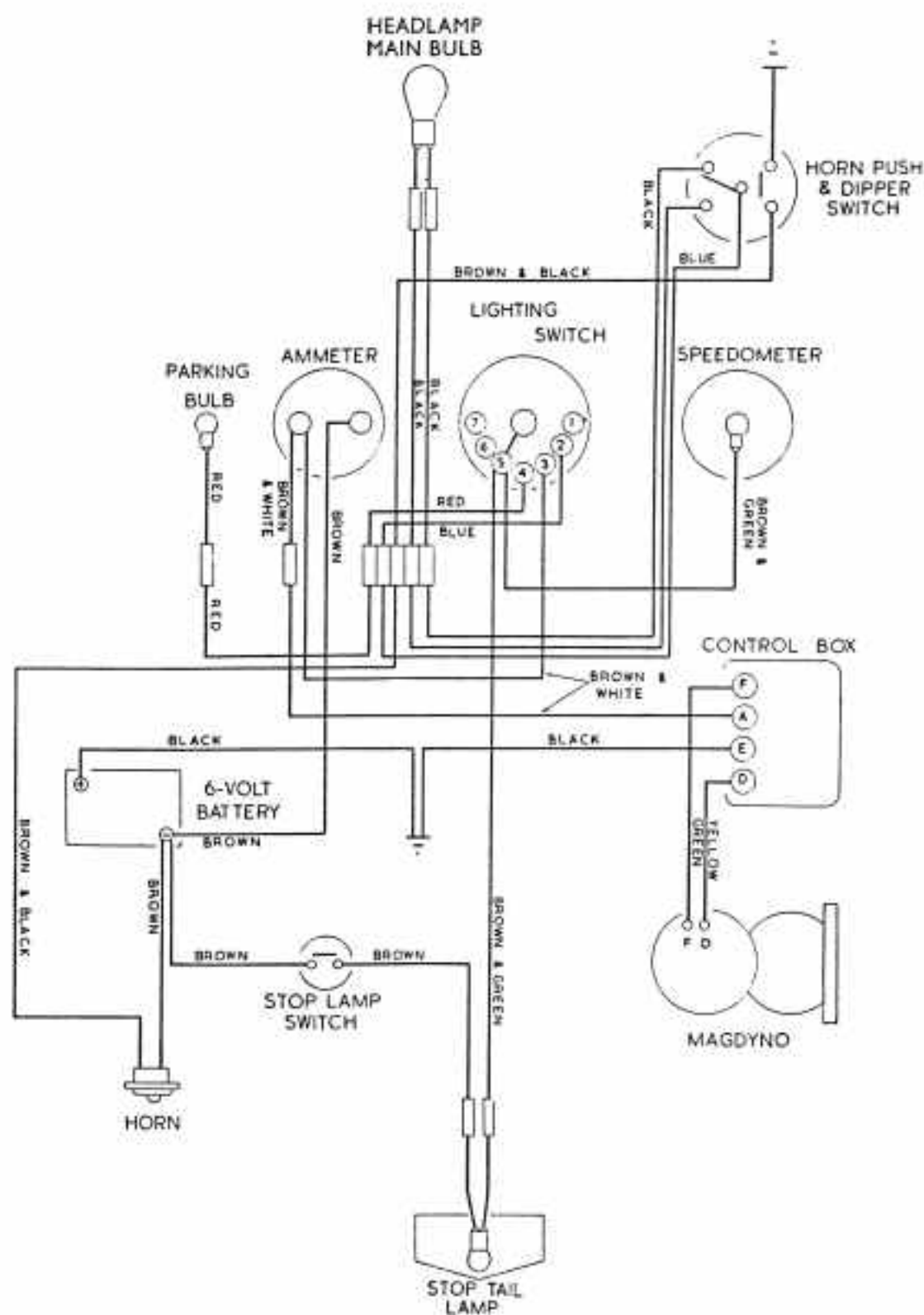


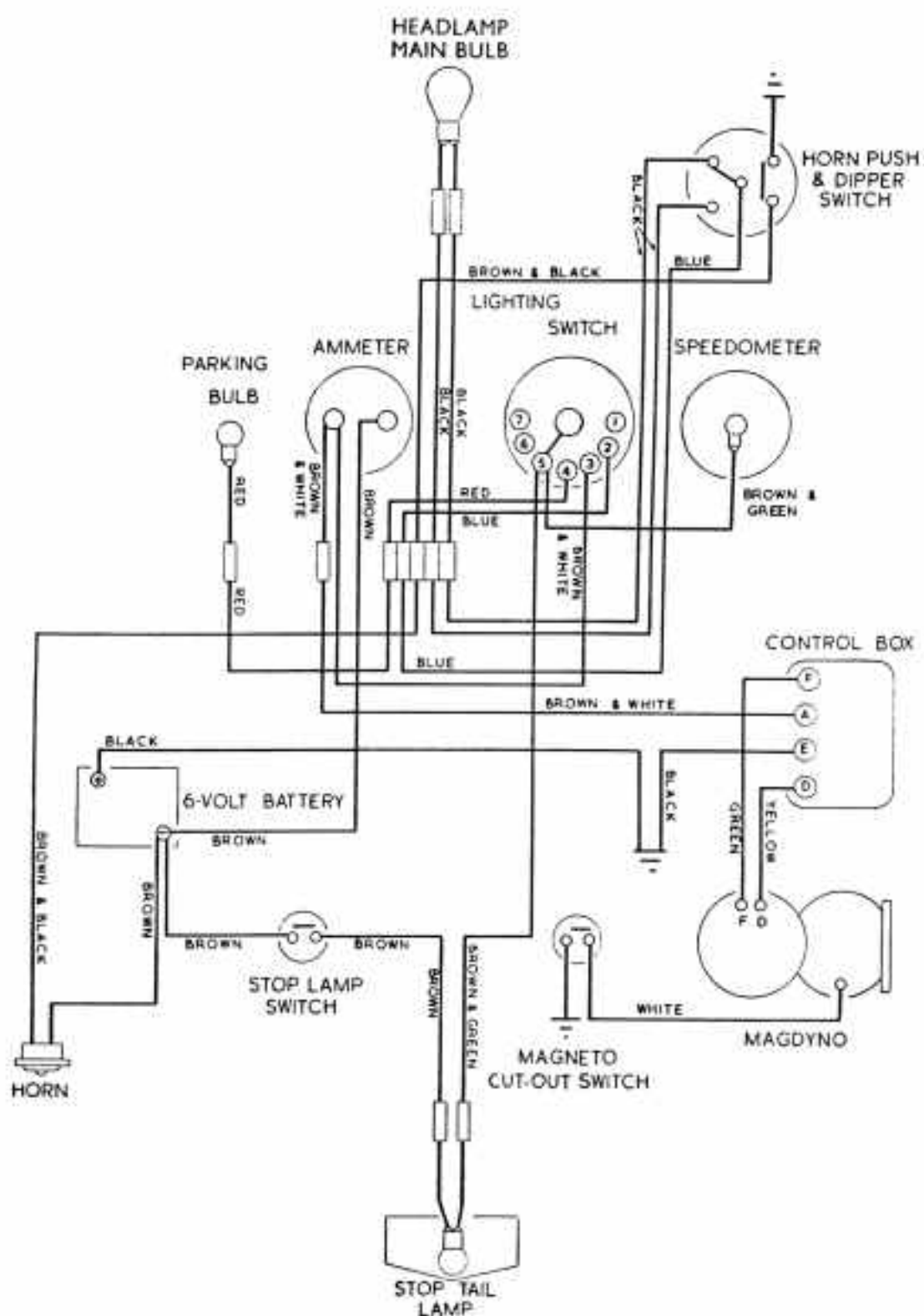
ISSUED:
FEBRUARY 1954

WIRING DIAGRAM No. W36362

6 VOLT



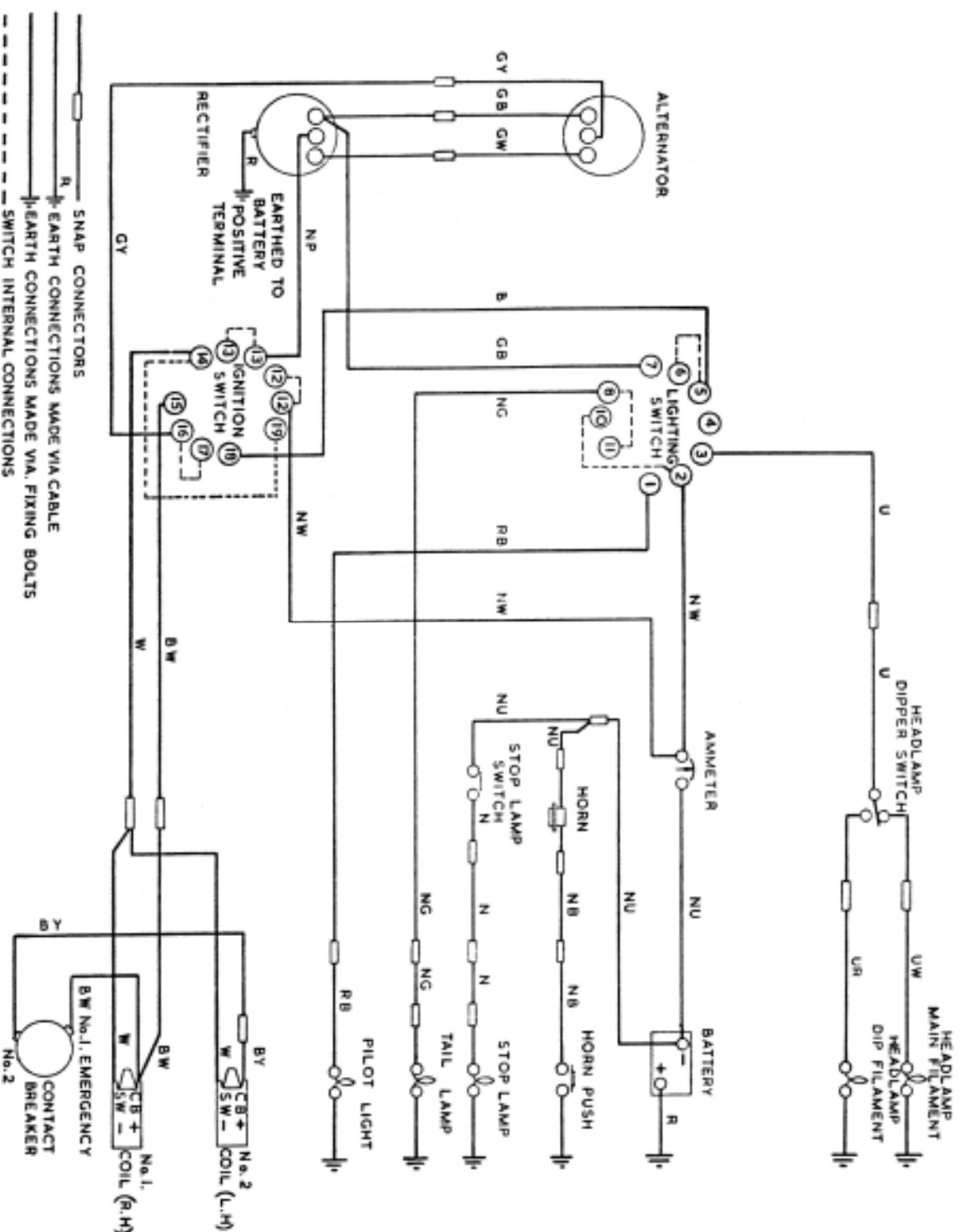




RE-ISSUED:
JULY 1960

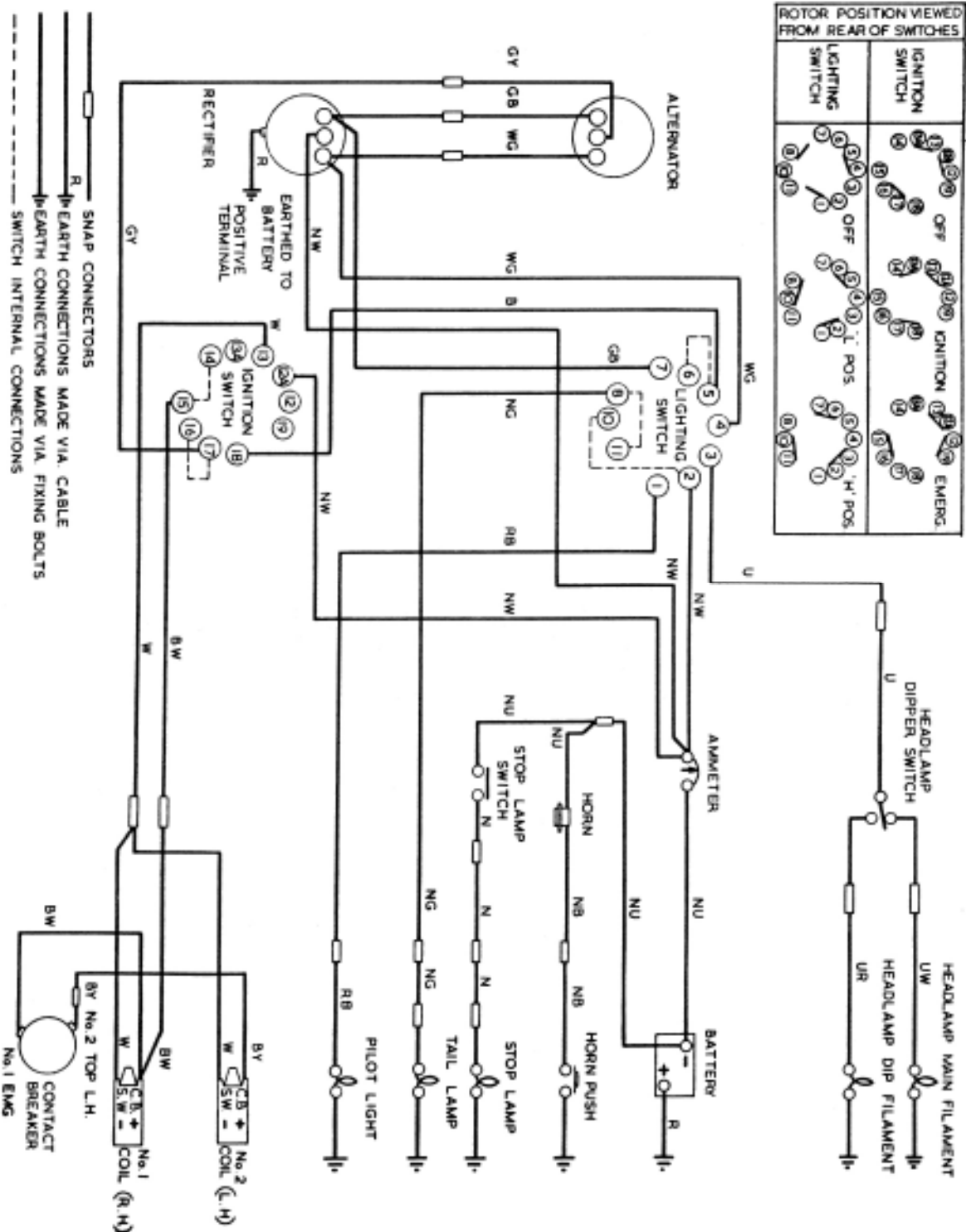
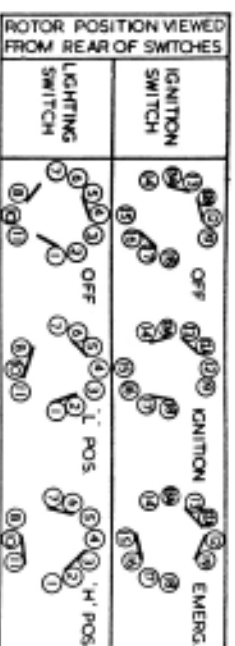
LUCAS ELECTRICAL EQUIPMENT

ARIEL



ARIEL MOTOR CYCLES
MODEL TS2 'ARROW' 250 C.C. TWIN-CYLINDER MACHINES
(1960)

WIRING DIAGRAM
No. W549 453 66A



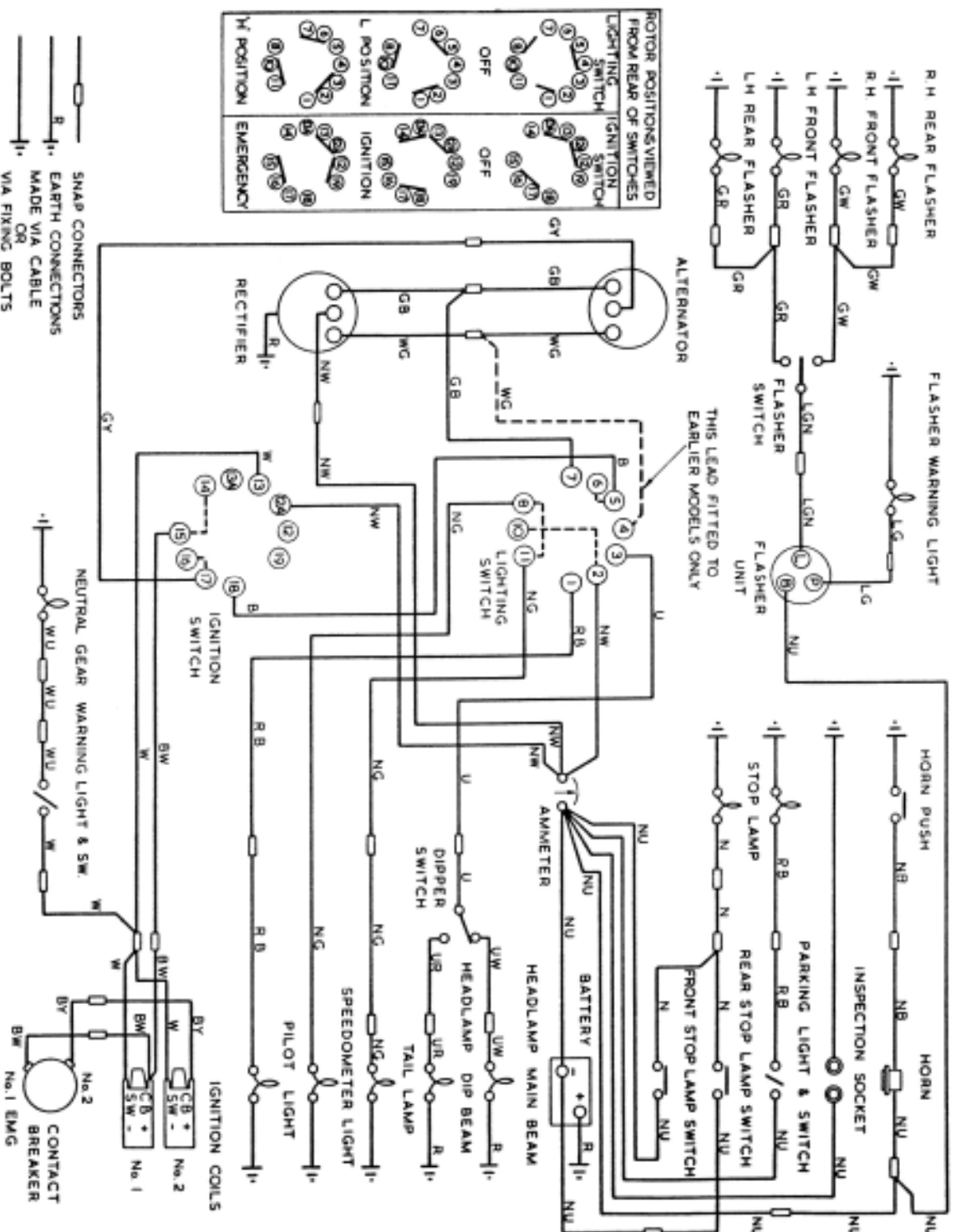
CABLE COLOUR CODE

	B	P	PURPLE	Y	YELLOW
U	BLUE	G	GREEN	D	DARK
M	BROWN	S	SLATE	L	LIGHT
R	RED	W	WHITE	H	MEDIUM

When a cable has two colour code letters, the first denotes the main colour and the second denotes the (inner) colour.

ARIEL MOTOR CYCLES
MODEL TS2 'ARROW' 250 c.c. TWIN-CYLINDER MACHINES
(1962)

WIRING DIAGRAM
No. W549 496 20



ARIEL MOTOR CYCLES
249 C.C. TWIN-CYLINDER TWO-STROKE "LEADER"
(1962)

WIRING DIAGRAM
No. WS49 496 15

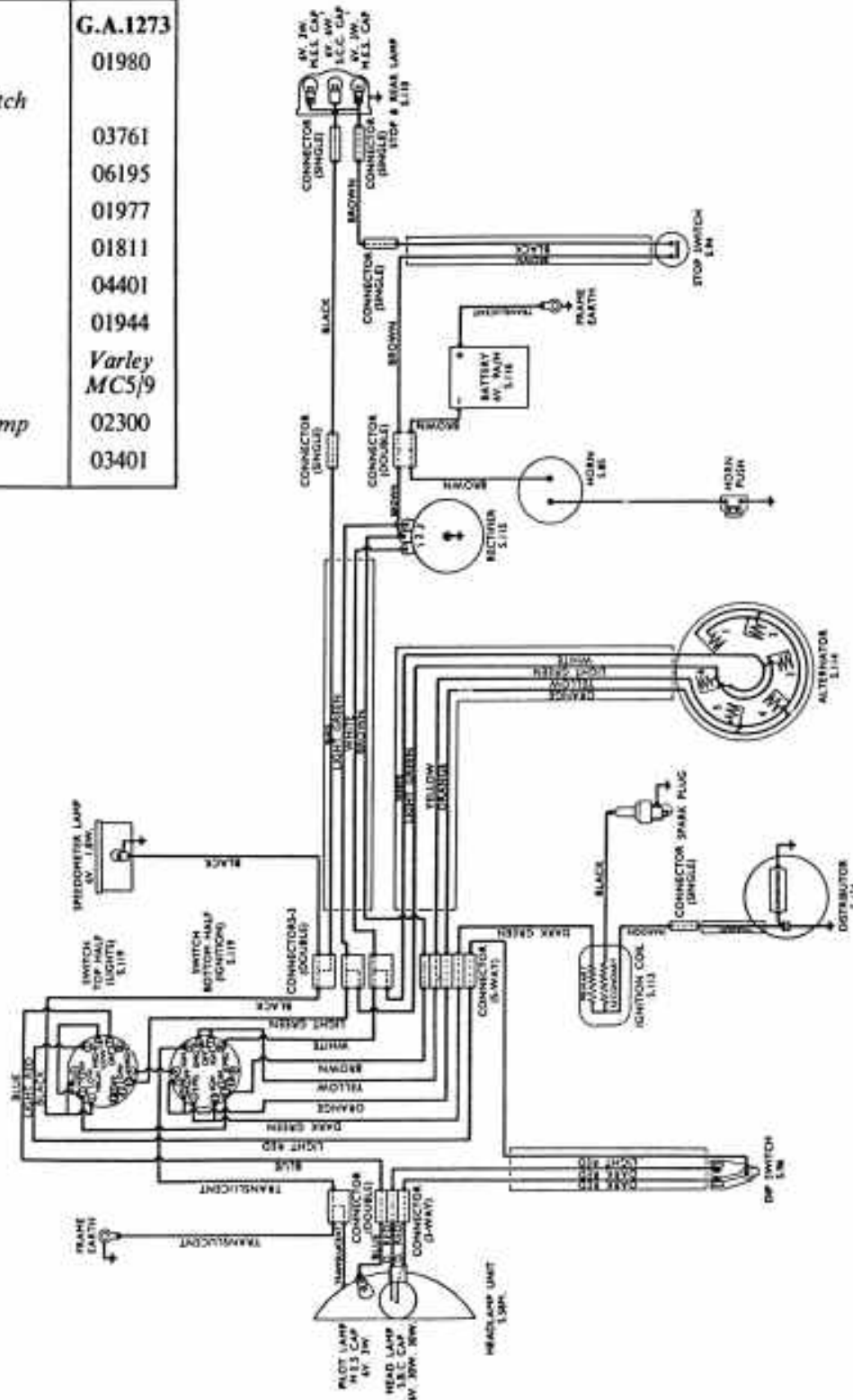
WIRING WIPAC DIAGRAM

ARIEL model "Colt" L.H.

FROM AUGUST 1953 TO MAY 1954

THE WIPAC GROUP · BLETCHLEY · ENGLAND

EQUIPMENT	PART No.
Set Complete	G.A.1273
Headlamp	01980
Headlamp Switch & Harness	03761
Dip Switch	06195
Alternator	01977
Distributor	01811
Rectifier	04401
Coil	01944
Battery	Varley MC5/9
Stop & Tail Lamp	02300
Stop Switch	03401

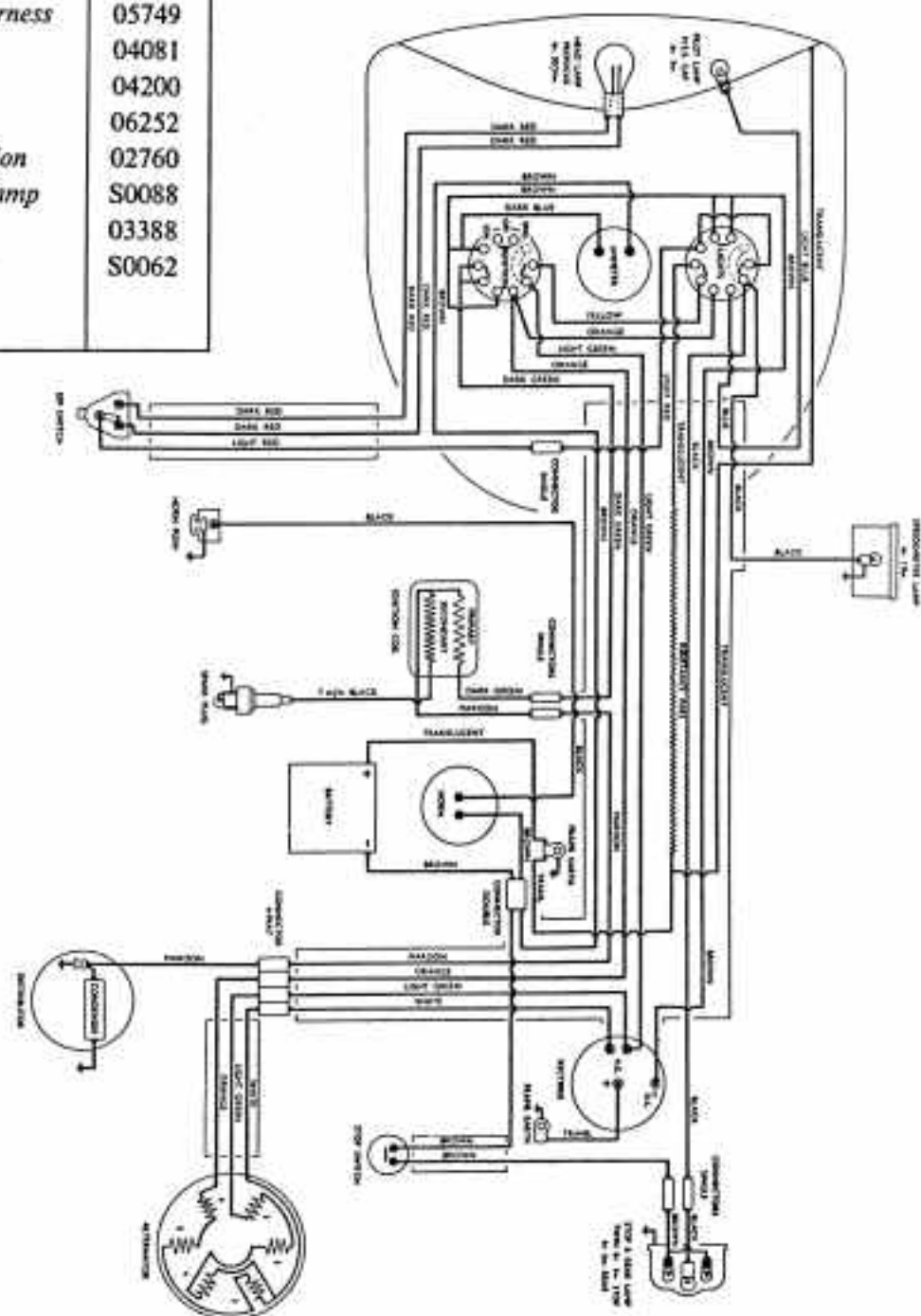


WIRING WIPAC DIAGRAM

ARIEL model "Colt" L.H. MODELS PRODUCED FROM AUGUST 1956

THE WIPAC GROUP · BLETCHLEY · ENGLAND

SPARES UNITS	PART No.
Headlamp (complete)	S0085
Headlamp (less harness and Ammeter)	S0086
Harness	S0087
Dip Switch	06195
Dip Switch Harness	05749
Alternator	04081
Distributor	04200
Rectifier	06252
Coil—6v. Ignition	02760
Stop & Rear Lamp	S0088
Stop Switch	03388
Ammeter Unit	S0062



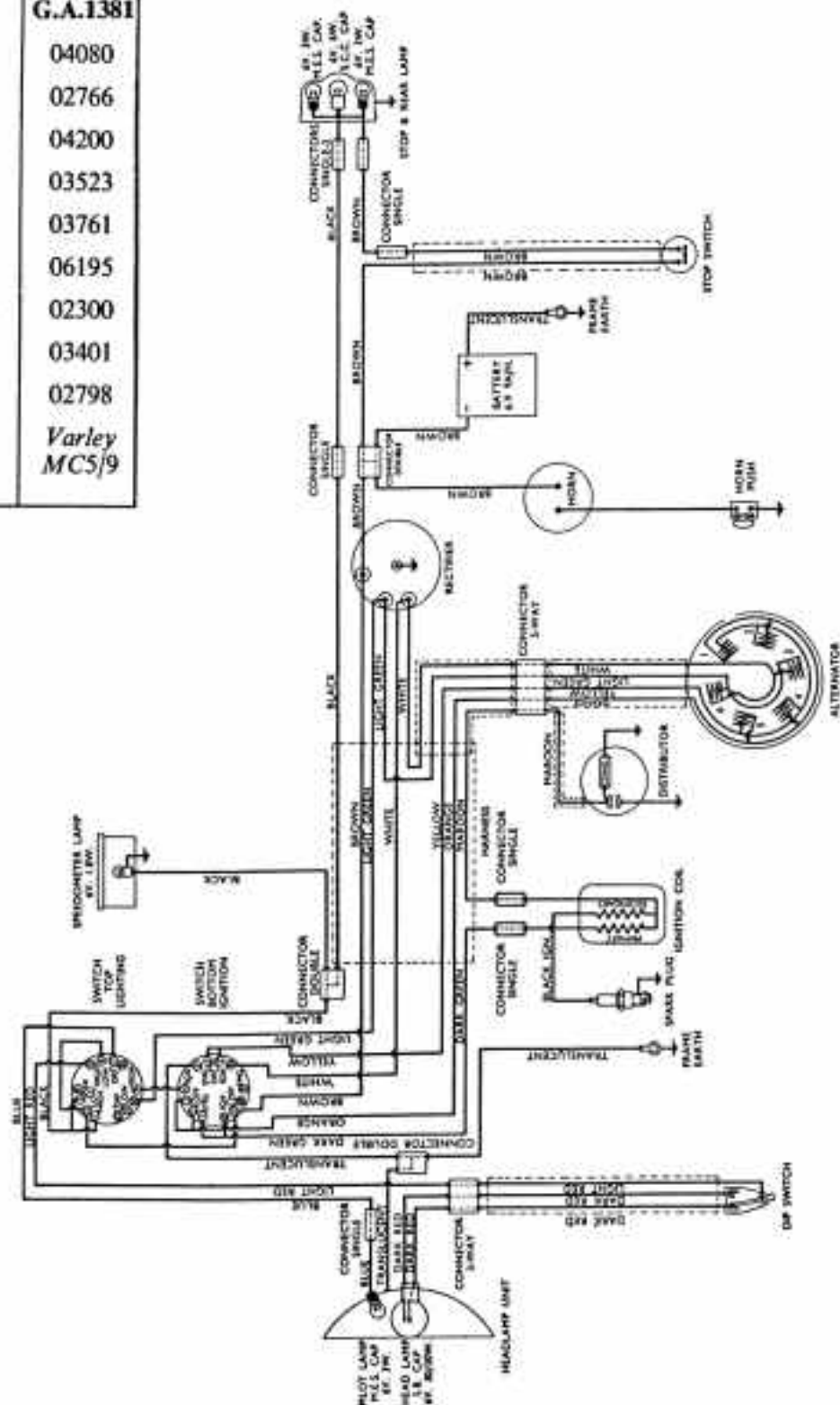
WIRING WIPAC DIAGRAM

ARIEL model "Colt" L.H.

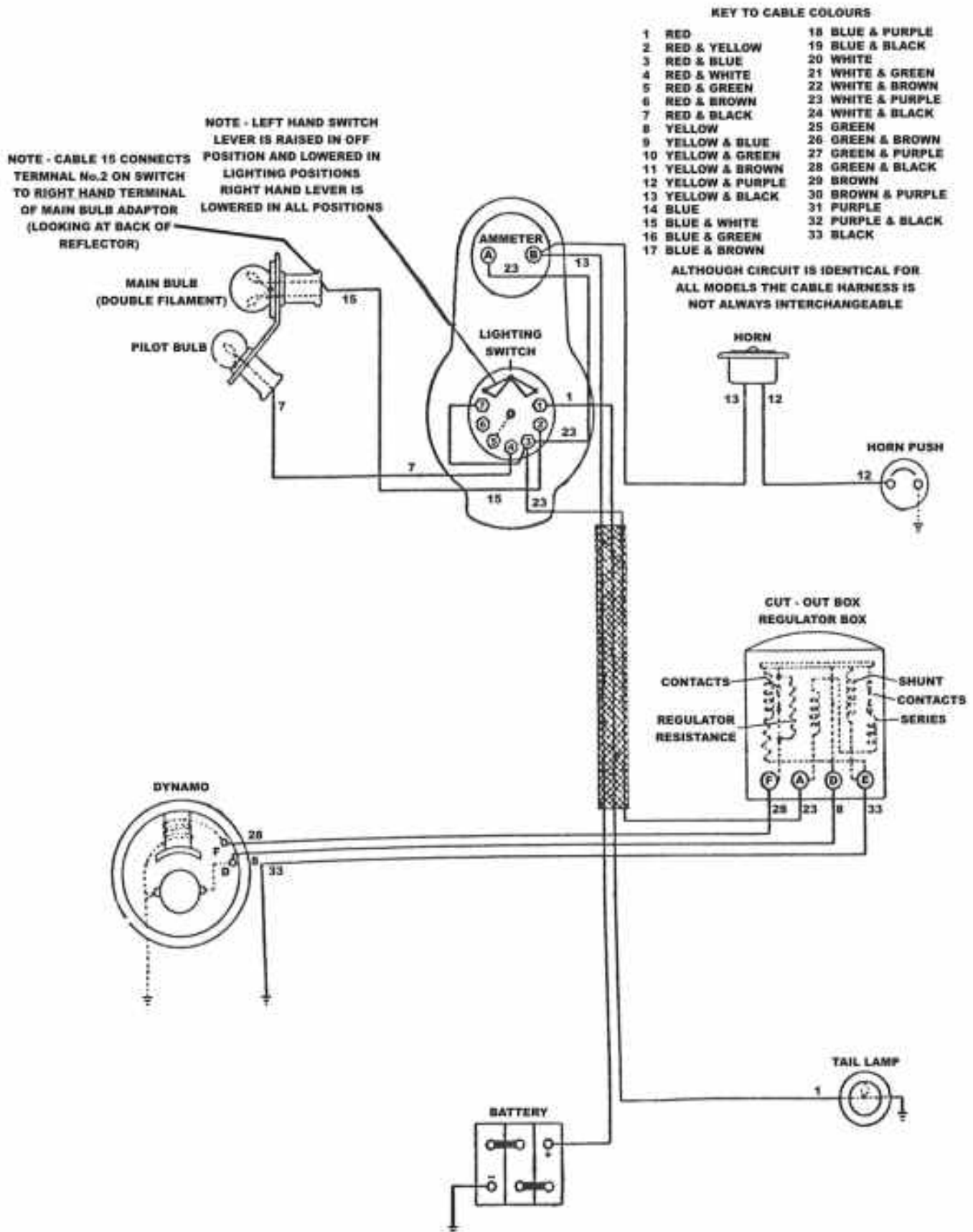
FROM MAY 1954 TO SEPTEMBER 1954

THE WIPAC GROUP · BLETCHLEY · ENGLAND

EQUIPMENT	PART No.
Set Complete	G.A.1381
Alternator	04080
Coil—6V. Ignition	02766
Distributor	04200
Headlamp	03523
Switch & Harness	03761
Dip Switch	06195
Stop & Rear Lamp	02300
Stop Switch	03401
Rectifier	02798
Battery	Varley MCS/9



Wiring Diagram for ARIEL Model W/NG (Military X/WD)



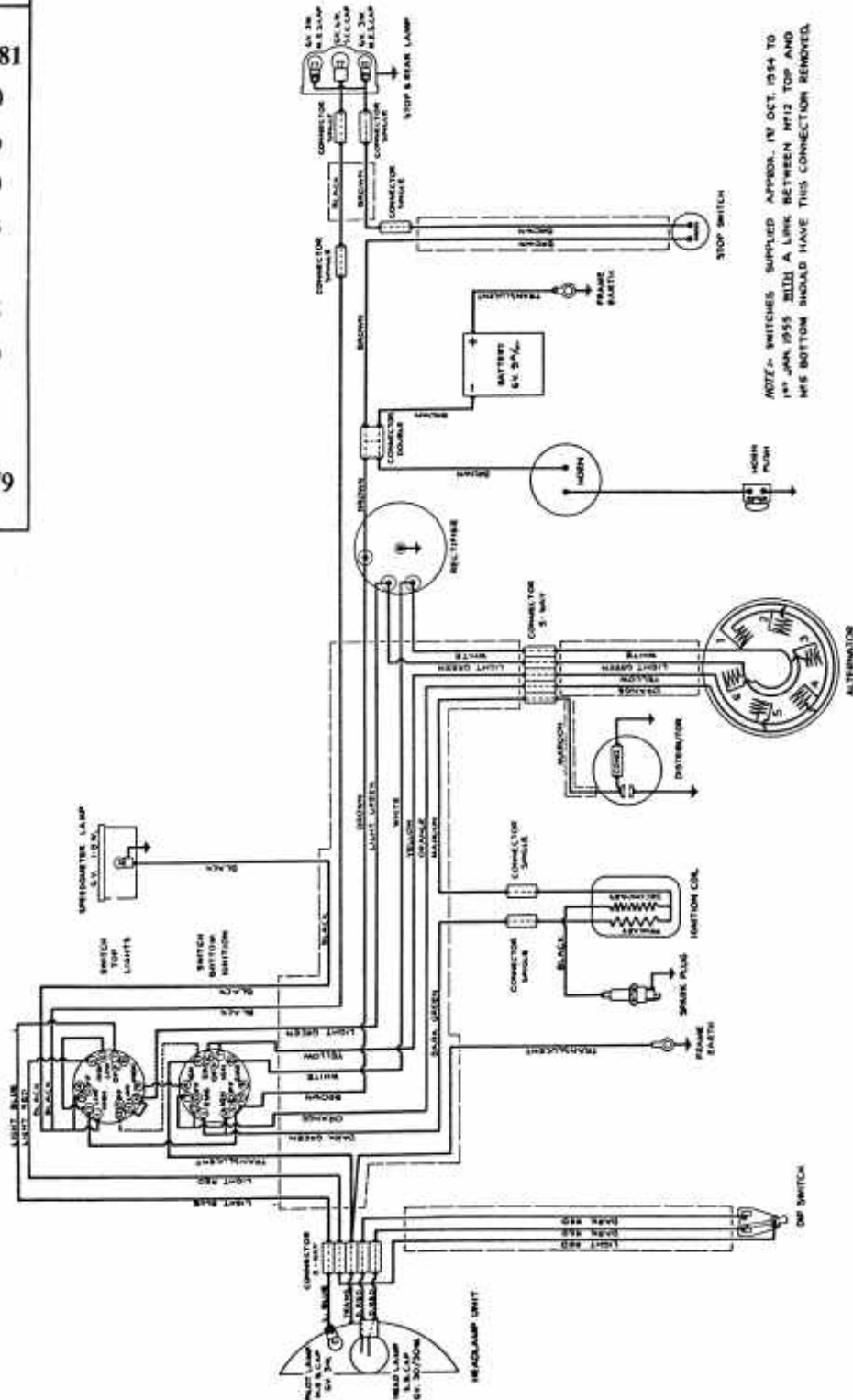
WIRING WIPAC DIAGRAM

ARIEL "Colt" Model L.H.

FROM OCTOBER 1954 TO JULY 1955

THE WIPAC GROUP · BLETCHLEY · ENGLAND

EQUIPMENT	PART No.
Set Complete	G.A.1381
Alternator	04080
6v. Oil Coil	02766
Distributor	04200
Headlamp	03523
Switch & Harness	03761
Dip Switch	06195
Stop & Rear Lamp	02300
Stop Switch	03401
Rectifier	02798
Varley Battery	MC5/9



NOTE:- SWITCHES SUPPLIED APPROX. 1st OCT. 1954 TO 1st JAN. 1955 WILL HAVE A LINK BETWEEN NO. 12 TOP AND NO. 5 BOTTOM SHOULD HAVE THIS CONNECTION REMOVED.

NOTE :- Switches supplied approx. 1st Oct. 1954 to 1st Jan. 1955 with a link between No. 12 top and No. 5 bottom should have this connection removed. (Shown dotted).