



## **PART NUMBER WW10221P**

### **6 volt positive earth DC regulator**

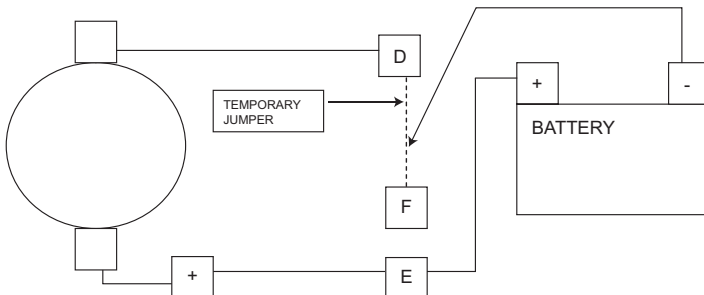
**Important** - please read these instructions carefully prior to fitting. This unit will be damaged if connected with reverse polarity. Before connection please check your chassis earth polarity and make sure you have the correct regulator for your earth polarity.

Please note the wiring instructions also require a 15 Amp fuse to be connected in the black wire. The regulator will cause this fuse to blow if the battery is connected backwards. If the fuse blows, re-check that the wiring and battery polarity are correct. Running the regulator with reverse polarity, even for a short duration, will damage it beyond repair. If in doubt contact an expert for advice.

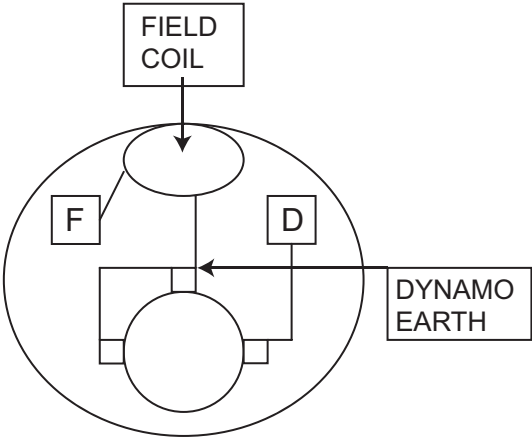
### **Testing and polarizing the dynamo (diagram 1)**

- 1** Remove the dynamo from the motorcycle
- 2** Connect a temporary jumper between F and D terminals
- 3** Connect a wire from the positive earth of the battery to the dynamo chassis
- 4** Connect a wire from the negative terminal of the battery and touch the jumper wire on the F and D terminals
- 5** The dynamo should now motor in the direction of drive ( see arrow on case )
- 6** This will determine if the field coil wires are connected correctly. If the armature does not motor in the correct direction then reverse the field coil wires and try again

### **Diagram 1 testing and polarizing**



**Correct internal wiring for the dynamo**



**Wiring diagram for a positive earth regulator**

**Important** - ensure the battery is disconnected before attempting to install the regulator. After you have completed all test procedures and are confident polarity and rotation are correct, connect the regulator as per this wiring diagram

